



STATUS OF WATER SUPPLY

Water Resources and Watershed
Committee

May 17, 2023

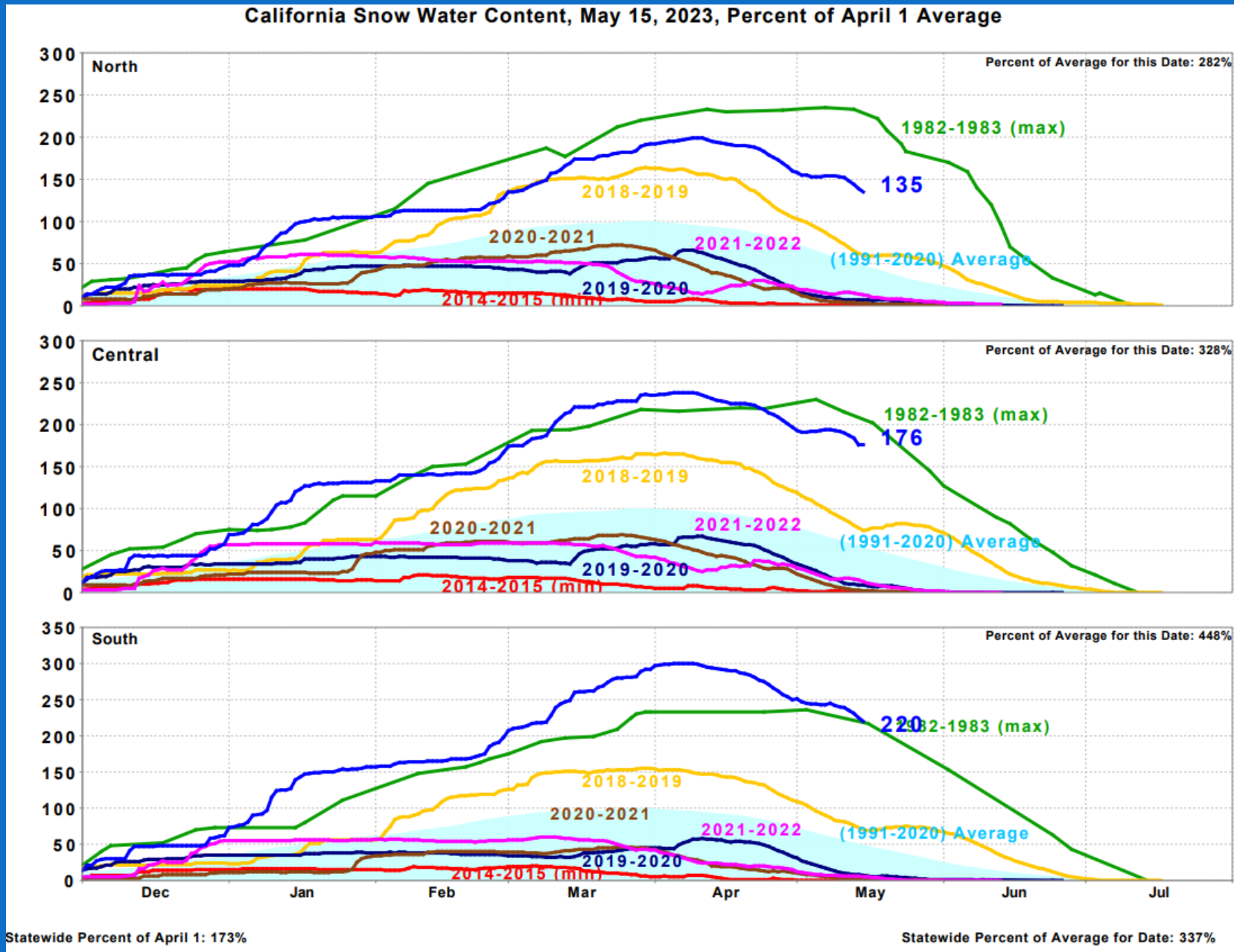
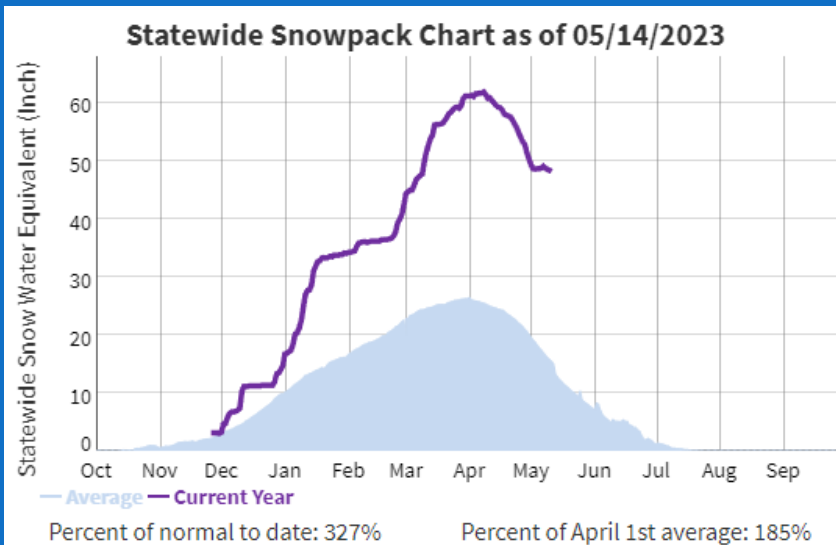
Sarah Fleury



Overview

- Snowpack and Reservoirs
- Climate Pattern Shift
- Allocation & Operations

Snow Water Content



Source: <https://cww.water.ca.gov/> and https://cdec.water.ca.gov/reportapp/javareports?name=PLOT_SWC.pdf

Reservoirs

Major Reservoirs

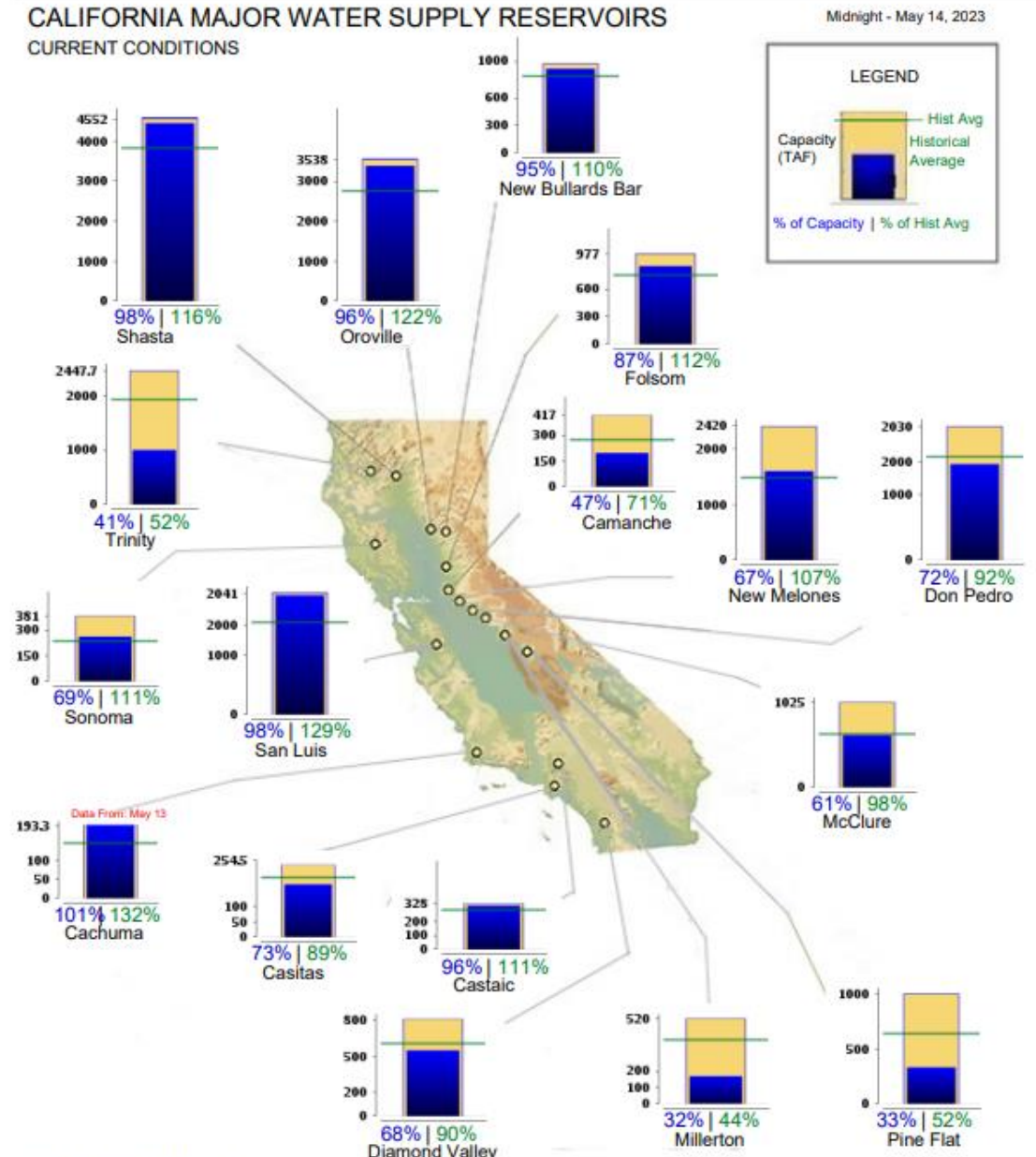
Oroville = 95% Capacity/110% Hist. Avg.
 San Luis = 98% Capacity/129% Hist. Avg.

Local Reservoirs

Castaic = 96% Capacity/111% Hist. Avg.

Source:

<https://cdec.water.ca.gov/reportapp/javareports?name=rescond.pdf>



Reservoirs Continued

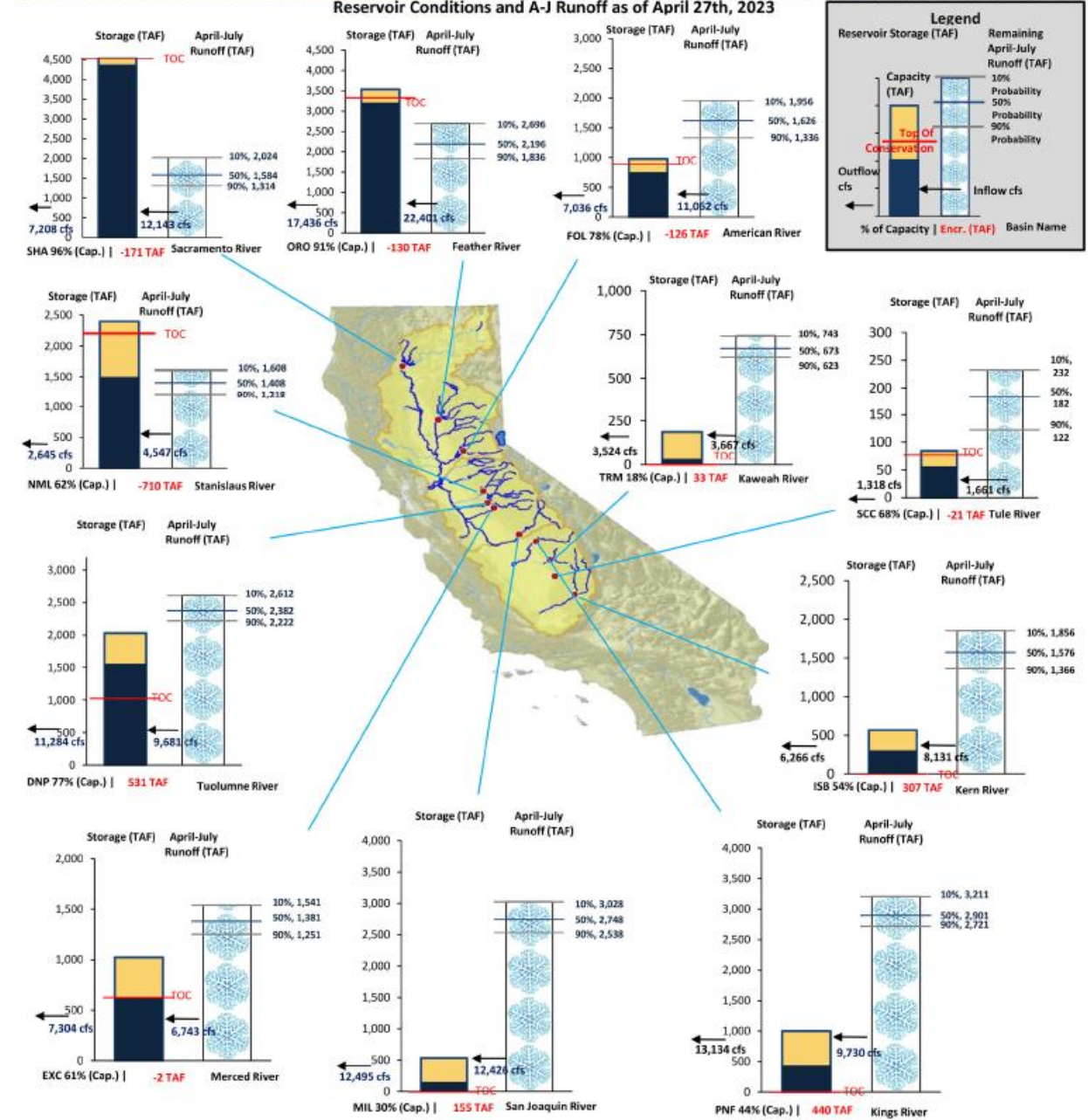
Reservoir conditions and anticipated snowmelt as of April 27, 2023

Graphic shows:

- Volume of reservoir
- Volume of remaining snowmelt
- Inflow from runoff
- Outflow for storage management

Lots of snow that still needs to melt!

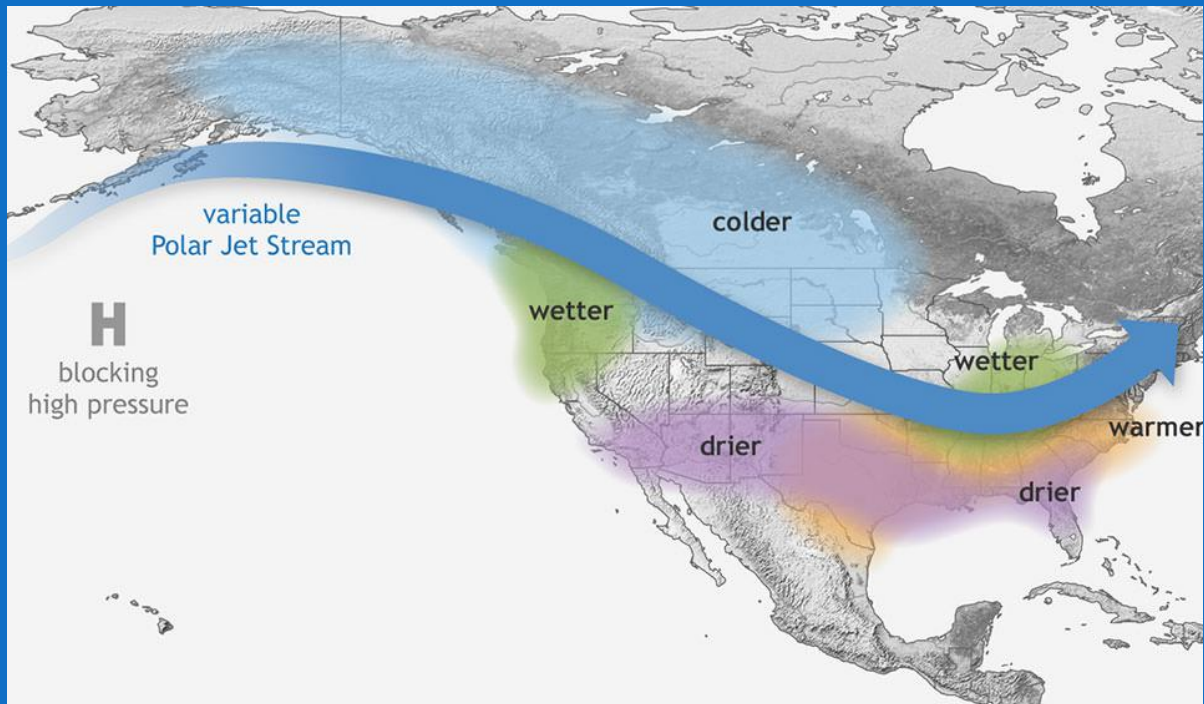
- Reservoir management key
- Inflows changing daily with temps
- DWR just opened intertie to bring in Kern River flows to aqueduct to help mitigate flood flow



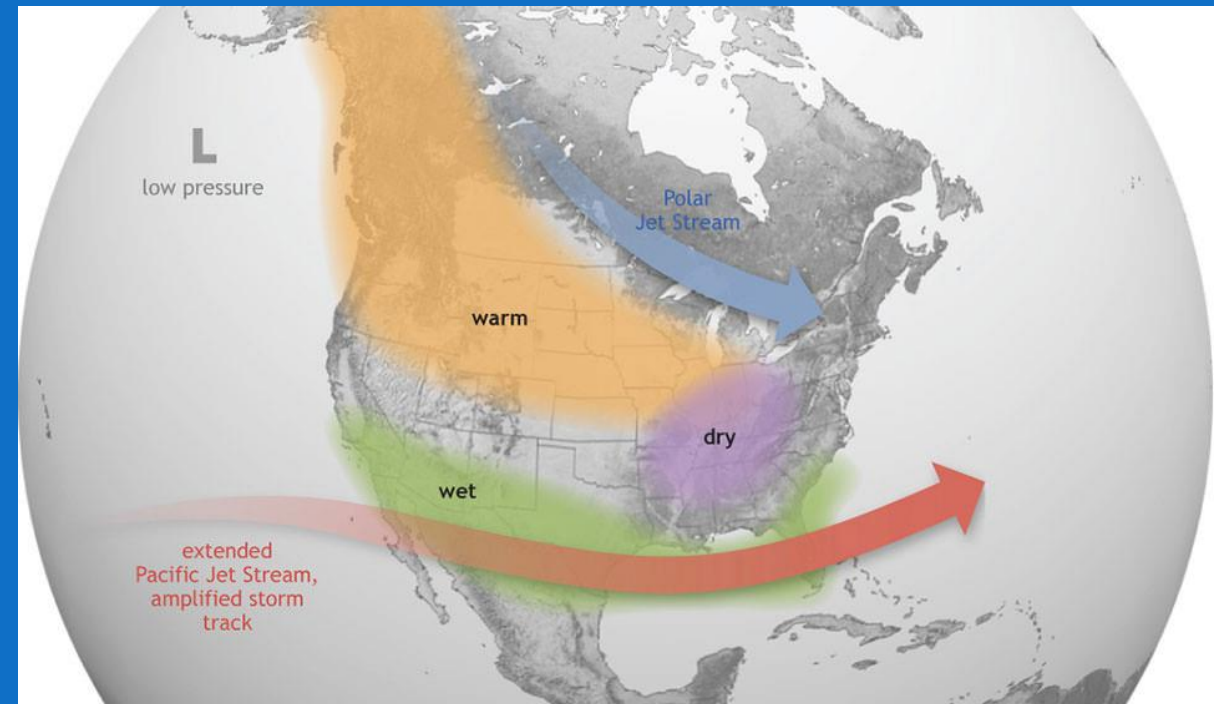
Daily reservoir data as of 4/26/2023 (CDEC)
 Snowmelt runoff forecast as of 4/27/2023 (8-120)

2023 Shifting from La Nina to El Nino

LA Nina



El Nino



La Nina ended in March 2023 and both dynamic and statistical models suggest potential return to El Nino by May -July 2023.

Source: <https://oceanservice.noaa.gov/facts/ninonina.html>

SWP Allocation Increase to 100%

Operating Plan

2023 Details

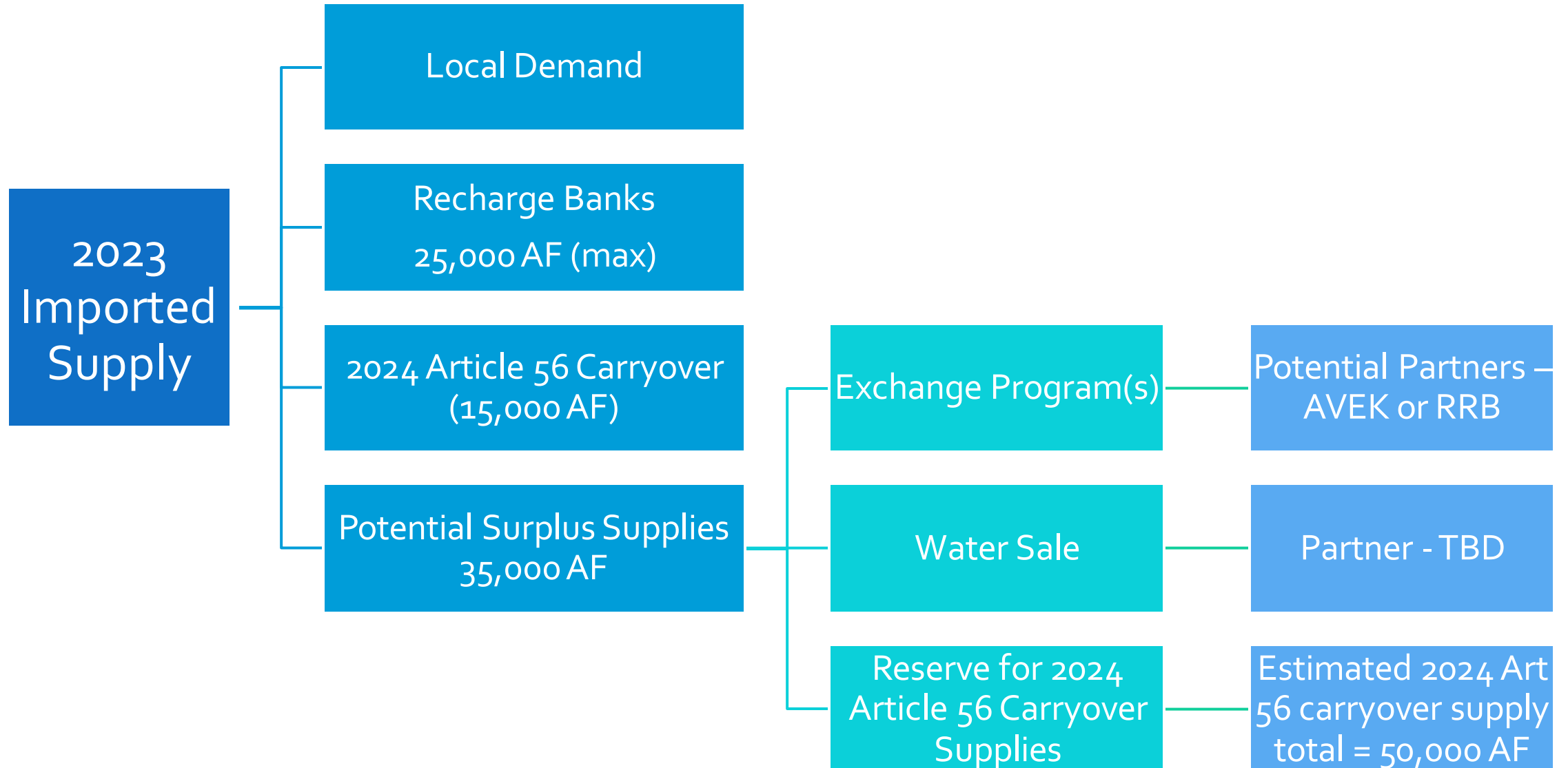
- 100% SWP Allocation
- Reduced groundwater production
- 2023 Art 56 carryover spill
- Art 21 water usage
- Full recharge of banking programs
- Fully executed exchange with MWD
 - MWD 3,144 AF
 - SCVWA 6,289 AF
- 7.5% Conservation demand reduction
- 2023 surplus water 35 TAF

2024 Details

- SWP 50%, 25% & 5% Allocation
- Includes new PFAS/PFOA MCL impact assumptions
- 2024 Art 56 carryover available 15 TAF

2023 Operating Plan 5-15-23	2023 100% SWP Allocation	2024 50% SWP Allocation	2024 25% SWP Allocation	2024 5% SWP Allocation
Demand	66,500	70,000	70,000	70,000
Groundwater Supplies	18,000	27,500	27,500	27,500
Alluvium	11,000	18,000	18,000	18,000
Saugus	7,000	9,500	9,500	9,500
Recycled Water	500	500	500	500
Imported Demand	48,000	42,000	42,000	42,000
Imported Supplies				
SWP Table A	95,200	47,600	23,800	4,760
BVRRB	11,000	11,000	11,000	11,000
Total Available Imported Supplies	106,200	58,600	34,800	15,760
<i>Excess Imported Supplies (neg = shortfall)</i>	58,200	16,600	(7,200)	(26,240)
Dry Year Water Supplies				
SWP Carryover-Art 56 (not guaranteed)	17,000	15,000	15,000	15,000
Art 56 Carryover SPILL	(2,634)			
Article 21 Water	900			
Rosedale Banking	(20,000)	(20,000)		10,000
Semitropic SWRU Banking	(5,000)		5,000	5,000
MWD Exchange	(3,144)			
Conservation WSCP demand reduction	4,988			
Flexible Storage (up to 6,060 AF)				6,060
Potential SWP Carryover at End of Year (neg = shortage)	50,310	11,600	12,800	9,820
2023 Potential Surplus for Water Sales/Exchanges CO 15 TAF	35,310			

Imported Supply Disbursement





QUESTIONS